



**Herman G. Honanie**  
CHAIRMAN

**Alfred Lomahquahu Jr.**  
VICE-CHAIRMAN

# **Hopi Tribe**

## **Long Range Transportation Plan**



# Hopi Tribe

## Long Range Transportation Plan

- Transportation systems and travel demand are functions of the human activities that take place on land, air, or water.
- Therefore, the evaluation of existing conditions or projection of future conditions requires that existing land use, potential land use, economic activity, and development trends be understood.
- So the need to address current and future conditions is through establishment of planning for transportation systems.
- Long Range Transportation Plans are developed to assist with and used as the guide and Hopi is not an exception to any planning. As Hopi have always followed the plan of our Creator.

## **Hopi Tribe Long Range Transportation Plan**

March 1988 Hopi Tribe, Office of Research and Planning a  
“Hopi Comprehensive Development Plan” was developed.

Hopi Tribe’s *Overall Economic Development Program for Fiscal Year 1991 – 1993* (OEDP)

The primary sources of information regarding the existing conditions at the time on the Hopi Indian Reservation were the previous plans provided to;

### **Transportation Planning Study For the Hopi Indian Reservation August 1994**

Prepared by Presnell Associates Inc.

Hopi Tribe’s first developed Transportation Plan.



**Hopi Tribe  
1994  
Transportation Planning Study**

The recommended transportation plan from the 1994 Transportation Planning Study consisted of;

- An intergrated set of highway improvements.
- A construction program based on potential sources of funding.
- The Tribe's priorties.
- Discussion of plan implementation.
- Updating procedures.

## **Hopi Tribe Long Range Transportation Plan**

On November 29, 2011 the Hopi Tribal Council Resolution H-09-2011 adopts the revised Hopit Potskwaniat to serve as the Strategic Plan for the Hopi Tribe. The Plan sets out the Mission, Goals & Objectives of the Hopi Tribe's transportation needs of the Tribe: a) road maintenance & construction; b) road safety; c) transit, and; d) airport facilities.

In following the Hopit Potskwaniat, Hopi Transportation Task Team (HTTT), through Hopi Tribal Council action initiates a P.L. 93-638 contract with the Bureau of Indian Affairs (BIA), Western Regional Office (WRO) to further enter into a contract with Red Plains Professional Inc. to complete the LRTP.

In July 2013 the Hopi Department of Transportation is established by Tribal Resolution H-055-2013 which shall oversee all transportation road maintenance and construction projects throughout all Hopi lands conduct programs and services to address the Hopi transportation priorities and needs as determined by the Council or by the Department as delegated or required by the council. to assist with the developing LRTP.





## Hopi Tribe Long Range Transportation Plan



With the established HDOT, and in working with the consulting firm final presentations were provided to the villages and to work towards the final draft.

In June 15<sup>th</sup>, 2014 the draft final report is prepared and in August of 2015 the draft report is provided to HDOT for review.

The Draft Final Report have been reviewed by HDOT to be forwarded to HTTT for its review and upon acceptability will be made available to the general public for review and comment.

Thereafter presentation of the final draft to provide to Hopi Tribal Council for acceptance of the Hopi Long Range Transportation Plan.

# The Hopi Tribe GIS Program Roads & TTP Inventory of Official Routes



**The Hopi Tribe**

**Regional Information:**  
 The Hopi Tribe is a sovereign nation located in northeastern Arizona with a population of 14,000 people. The tribe is a member of the Hopi Indian Tribe, which is a member of the Navajo Nation. The tribe is a member of the Navajo Nation and the Hopi Indian Tribe. The tribe is a member of the Navajo Nation and the Hopi Indian Tribe. The tribe is a member of the Navajo Nation and the Hopi Indian Tribe.

**About the Map:**  
 This map is a GIS-based map of the Hopi Tribe's territory. It shows the tribe's land, roads, and other features. The map is a GIS-based map of the Hopi Tribe's territory. It shows the tribe's land, roads, and other features. The map is a GIS-based map of the Hopi Tribe's territory. It shows the tribe's land, roads, and other features.

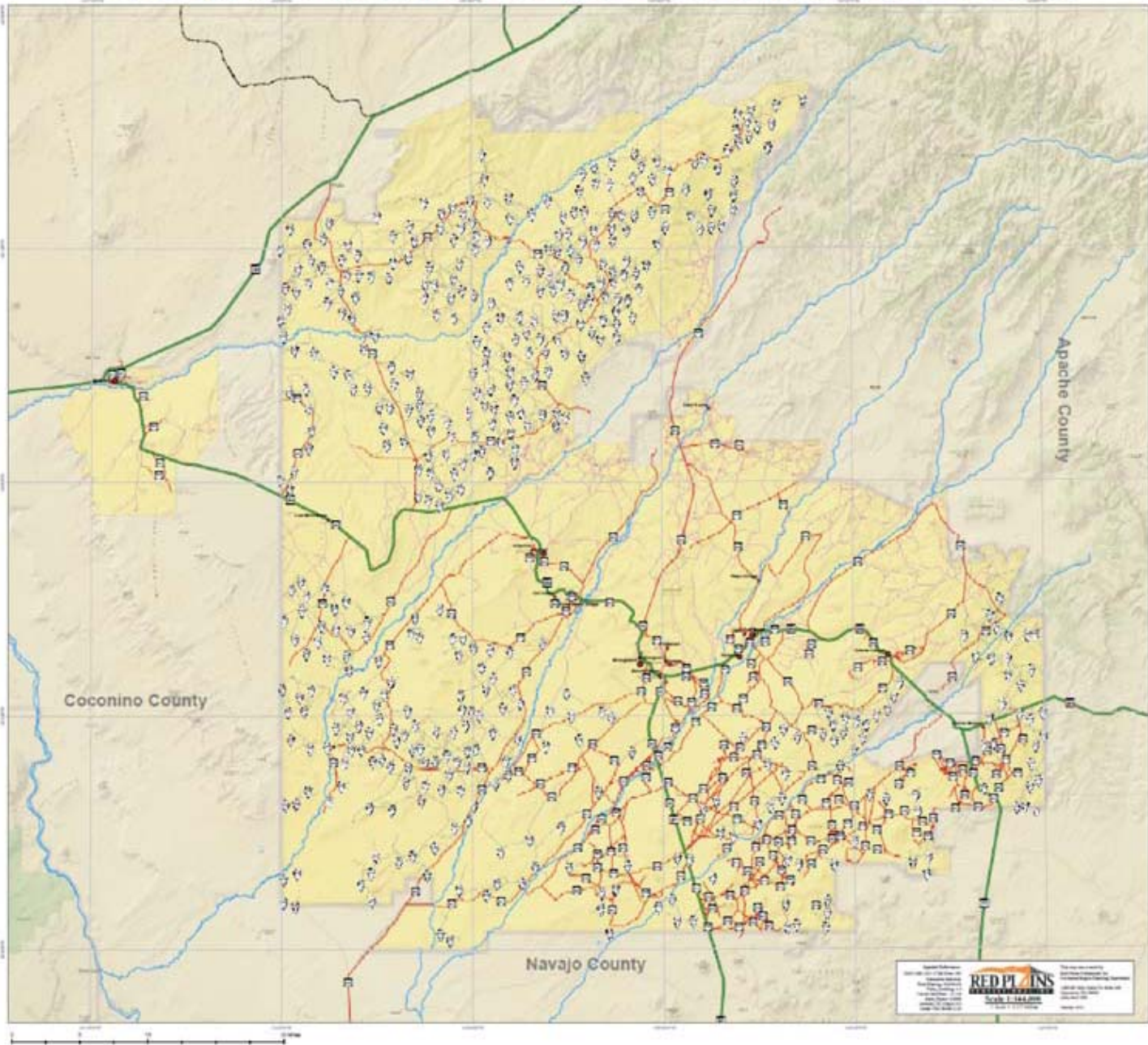
**Map B**  
 An Overview of Existing TTP Inventory, GIS Program Roads, & Future GIS Program Roads for the Hopi Tribe

**City Populations:**

- 0 - 1,499
- 1,500 - 7,499
- 7,500 +

**State Highways:**

- State Highways
- Railroads
- Streams
- Official Routes
- Future GIS Program Roads
- GIS Program Roads
- Hopi Bound: RFP
- County Boundary



## Hopi Tribe Long Range Transportation Plan

Where do we go from here upon acceptance of Hopi's Long Range Transportation Plan?

Fully utilized the plan developed as key components within are and identify;

- Corridor Safety Analysis and Roadway Safety Audits.
- Pedestrian Footpath and Trails Plan.
- Community Street Improvement Projects.
- Indian Reservation Roads(IRR) / Tribal Transportation Program(TTP) Inventory Update.
- Adjacent qualifying parking lots.
- Improvement of Earth Roads to Gravel.
- New Residential Development.
- Drainage analysis.
- Seasonal and Cultural Access routes and control.



## Hopi Tribe Long Range Transportation Plan

The New Horizon, the need to update to include other;

- Expansion on Safety as Hopi has its approved Hopi Strategic Highway Safety Plan.
- How are we involved with our partners and within their plans.
- Growth is there consideration for expansion.
- Economy how do we contribute to the effort and the foreseeable future.
- Truck Traffic or large vehicle transport.
- Planning and Zoning is that a consideration.

**QUESTIONS?**

**Thank you**

