



## HOPI AGENCY

Wendell A. Honanie, Superintendent  
Hopi Indian Agency  
P.O. Box 158  
Keams Canyon, Arizona 86034  
Telephone: (928) 738-2228

Herbert Begay, Transportation Manager  
Hopi Indian Agency  
P.O. Box 158  
Keams Canyon, Arizona 86034  
Telephone: (928) 738-2220

---

---

---

---

---

---

---

---

## TOPICS FOR DISCUSSION

- What are your current projects that impact the Hopi Tribe?
- How can the Partnership assist these Projects?

---

---

---

---

---

---

---

---

## ROADS INVENTORY

- Overlap roads inventory between ADOT, NDOT, Navajo Region (Tuba City Agency, Chinle Agency, and Fort Defiance) and Western Region (Hopi Agency).
- Presently, we are working on revising our existing MOU between Navajo Region and Western Region. We need assistance to prevent on anymore overlapping. We are in process of organizing the owners for each route on Navajo and Hopi Reservation on the map. ADOT has his own, but the question is, once these state routes are inventoried on the Navajo and Hopi Reservation, how does the generating funds broken up to both tribes?

---

---

---

---

---

---

---

---

**HOPI 60 – LOW MOUNTAIN ROAD**

Beginning on the Hopi Reservation on State Route 264, north for 13.7 miles meets Navajo Route 65.

- At the first annual meeting, I had mentioned this before, we need assistances from ADOT on SR 264, for proper location approach and to date ADT in this area.
- Presently, the Hopi Tribe provided archaeological survey under CPO with Navajo County assisted with funds for a start up. Now the Navajo County has volunteer their assistance wants again by utilizing their grant writer on gathering information and budget submitted toward TIGER application funds for 22 million to design, plan and construct. The Navajo Region, also, provided some documents toward this application with Navajo Chapters and local school.
- Now we need assistance from partnering group for various steps to process with proper planning on to construction.

---

---

---

---

---

---

---

---

**DEVELOPING MINERAL AGGREGATE AND BORROW PITS**

To develop mineral aggregate and borrow pits on the Hopi Indian reservation, not just for the Low Mountain Road, but for all future construction for school easements, ADOT, Housing, Hospital, Airport and maintaining roads.

- We need assistance on planning for proper applications for Pit permits and utilize local Hopi CPO for environmental clearance to avoid the delays.

---

---

---

---

---

---

---

---

**UTILITY EASEMENT**

Through local ADOT and Hopi/Navajo BIA right-of ways.

- How we can establish a plan to avoid unnecessary costly delays.

---

---

---

---

---

---

---

---

## **AIRPORT**

We need assistance from partnering group to develop a MOU towards maintaining Polacca Airport for emergencies and safety for hospital patients

---

---

---

---

---

---

---

---

## **•ROAD PROJECT NO. HIR 2(11)**

This is a Safety Road project and qualified under ARRA and project location is between MP 14 to 16 on the Luepp Road.

---

---

---

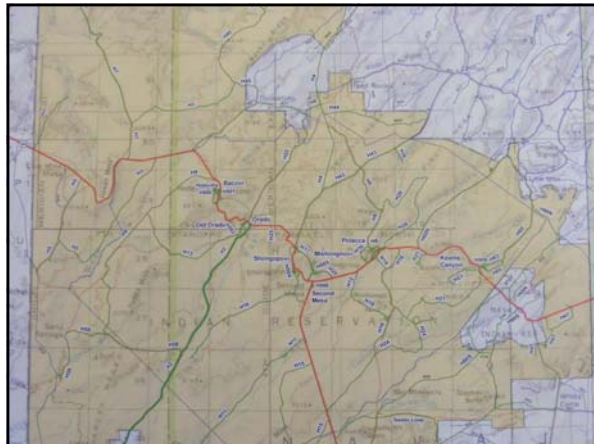
---

---

---

---

---



---

---

---

---

---

---

---

---



---

---

---

---

---

---

---

---



---

---

---

---

---

---

---

---



---

---

---

---

---

---

---

---



---

---

---

---

---

---

---

---



---

---

---

---

---

---

---

---