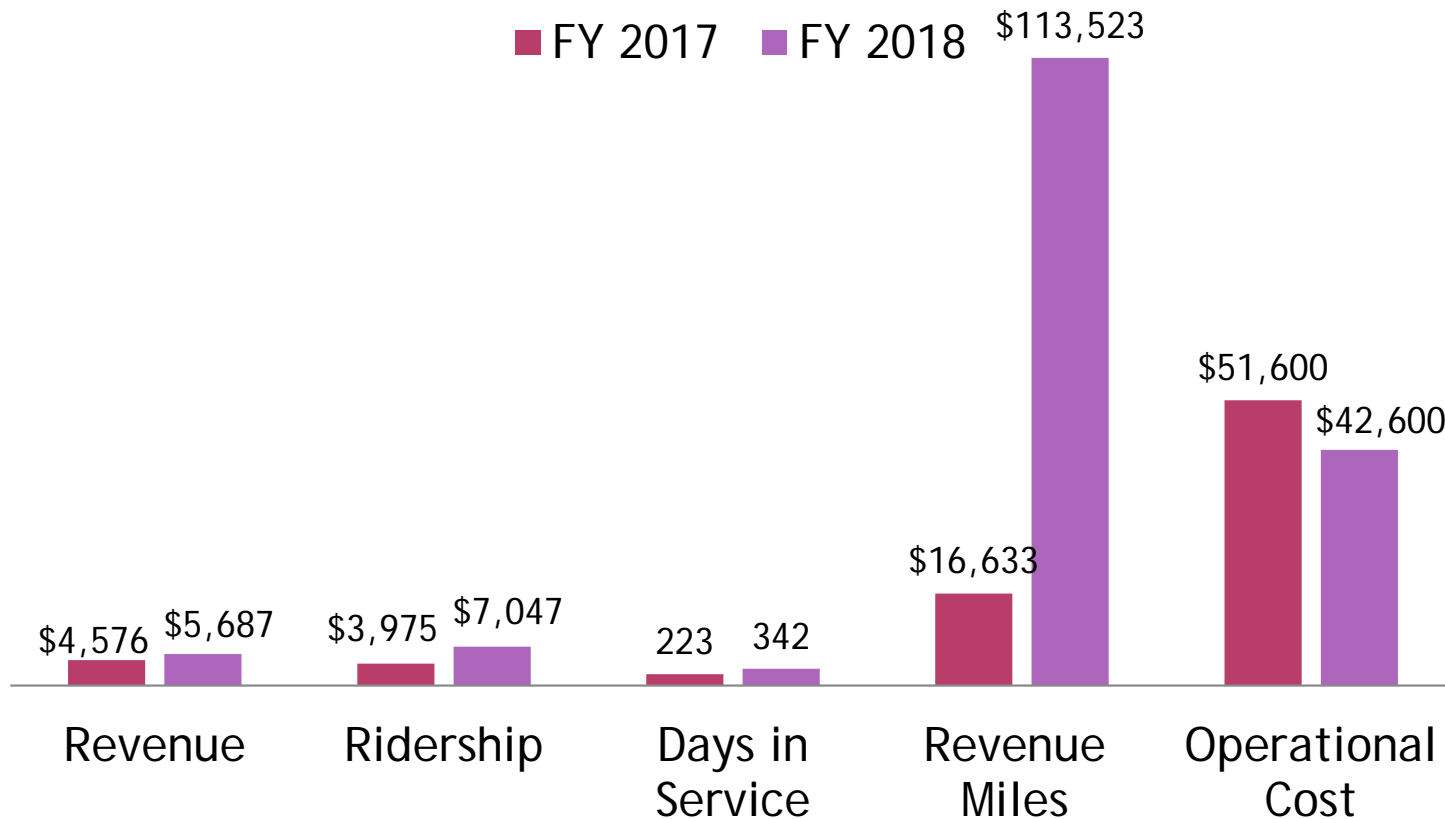


# FORT APACHE CONNECTION



# FORT APACHE CONNECTION FY 2018 OVERVIEW



Revenue increase by \$1,100.00

Ridership increase by 3,072

Revenue miles increased by 96,890

Operational Cost decreased by \$9,000.00

# FORT APACHE CONNECTION

## CURRENT HOURS

### ⦿ Hours of Operations

- Monday - Friday
- 7:00 AM - 3:30 PM

### ⦿ Fares

- One way: \$1.00
- All day passes: \$3.00
- Weekly Passes: \$7.50
- Monthly Passes: \$20.00
- Seniors (60+): half off

### ⦿ Routes

- Route 1
- Route 2

# FORT APACHE CONNECTION

## ROUTE 1 & 2

### ○ Route 1

- DOT to Cibecue
- 9 designated bus stops
  - DOT
  - Cibecue Complex
  - Cibecue Store
  - Carrizo
  - Carrizo Store
  - Cedar Creek Store
  - Altaha Stop
  - Canyon Day Store
  - Little Tokyo

### ○ Route 2

- DOT to McNary
- 13 designated bus stops
  - DOT
  - Fitness Center
  - NPC
  - Laundromat
  - Tribal Executive Building
  - Whiskey Flats
  - Rainbow City
  - I.H.S.
  - Diamond Creek
  - Church of Sharon
  - Cradleboard
  - Hondah Store
  - McNary Store

# FORT APACHE CONNECTION

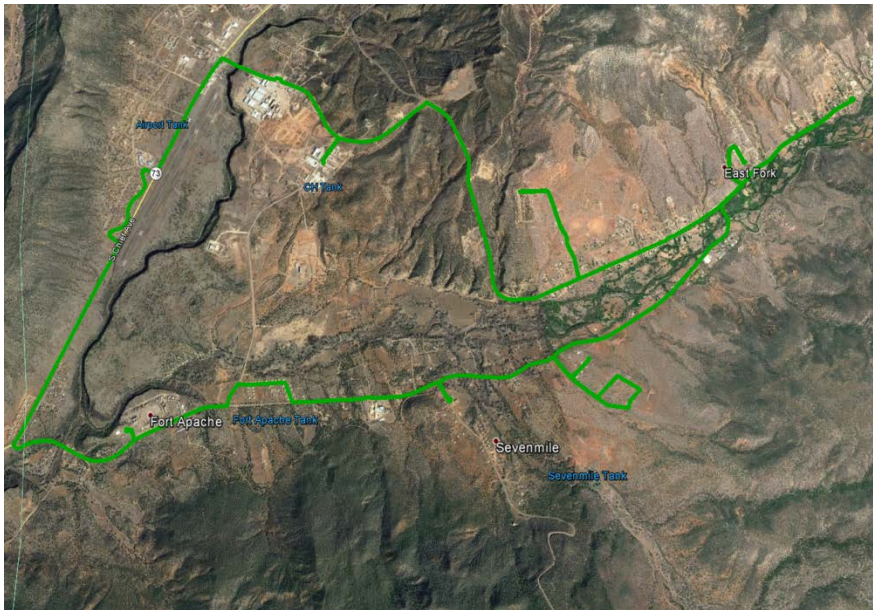
## ROUTE 3A

### ○ Route 3A

- Covers 18.5 miles
- 5 bus runs per day
- Connect at DOT

### ○ Route 3A

- 15 designated bus stops
  - DOT
  - FATCO Parking Lot
  - Tribal Utility Authority
  - Turkey Creek Apache Dawn
  - Turkey Creek Trading Post
  - Corn on the Cob
  - Community Building
  - East Fork Bridge
  - East Fork School Bus Stop
  - Seven Up
  - Seven Mile Store
  - Seven Mile School
  - Lonesome Dove
  - Fort Apache Museum
  - Little Tokyo



# FORT APACHE CONNECTION

## ROUTE 3B

### ○ Route 3B

- Covers 17 miles
- 5 bus runs per day
- Connect at DOT

### ○ Route 3B

- 18 designated bus stops
  - DOT
  - Tribal Executive Building
  - Tire Shop
  - Old Fair Grounds
  - FATCO Housing
  - FATCO Parking Lot
  - Tribal Utility Authority
  - Lonesome Dove
  - Fort Apache Museum
  - Six Pack
  - Canyon Day Community Building
  - Canyon Day Lutheran Church
  - Canyon Day Assembly of God
  - Kinishba Road
  - Fort Apache Housing
  - Chicken Coop
  - LDS
  - Little Tokyo



# FORT APACHE CONNECTION

## ROUTE 3 - OUTLINE

### ○ Route 3

- Purchased 2 buses with four wheel drive - complete
  - Buses will be delivered in June 2019 - in progress
  - Buses will be inspected and certified by ADOT in June 2019 - in progress
  - Route 3 running by July 2019
- Hire 2 transit drivers
  - May 2019 - in progress

# FORT APACHE CONNECTION

## ROUTE 4 - PLANNING

### ○ Route 4

- Provide public transportation for the communities of:
  - Cibecue
  - Carrizo
  - Forestdale
  - Show Low
- Planning Route 4
  - Phase 1: Identify need of area
  - Phase 2: Develop Service Options
  - Phase 3: Implement Plan
- Purchased 2 buses with four wheel drive
- Hire 2 transit drivers



# FY 2019 FACT GOALS

## ◎ Goal 1: Increase Funding For Transit

- Task 1: Apply for grants with FTA & ADOT - **in progress**
  - Bus and Bus Facility Grant
  - Tribal Transportation Grant
  - Enhance Mobility of Seniors & Individuals with Disabilities
- Task 2: Sell Advertising Space
- Task 3: Contract with Tribal Entities

## ◎ Goal 2: Increase Ridership

- Task 1: Conduct Semi-Annual Surveys - *complete*
- Task 2: Create Flexible Bus Schedule - *complete*
- Task 3: Connect with San Carlos Apache Tribe's Public Transit - **in progress**

# FY 2019 FACT GOALS

## ○ Goal 3: Implement Route 3

- Task 1: Purchase 2 buses- *Complete*
- Task 2: Plan Bus Route and Bus Stops- *Complete*
- Task 3: Hire 2 bus drivers- *in progress*
- Task 4: Implement Route 3- *in progress*

## ○ Goal 4: Plan For Route 4

- Task 1: Begin the planning of Route 4- *in progress*
- Task 2: Public input- *in progress*
  - Conduct Community Surveys
  - Hold community public meetings
- Task 3: Purchase 2 buses- *in progress*
- Task 4: Plan Bus Route and Bus Stops- *in progress*
- Task 5: Hire 2 bus driver- *in progress*
- Task 6: Implement Route 4- *in progress*